

# *CREATEit Overview*

## **Introduction**

CREATEit is designed, specifically for the iPad, to provide the user with an intuitive and versatile tool set to easily present new ideas to an audience.

You can simply add captions and graphic items to your photos for sharing or, AirPlay to an AppleTV, to dynamically present your stories in a very unique and compelling way.

## **Layers**

The CREATEit canvas includes four separate layers. You first choose a scene for the background layer. Items and text can be added to your scene. These items can be stacked in any order. A two finger press will send an item to the back and selecting an item will move it to the top.

Paint can be applied either below, or on top of the items layer. Tap the Navigation Icon to get started.

*CREATEit launches with a blank canvas overlaid with four icons*



*Navigation*



*Cast*



*Paint*



*Text*



## Backgrounds

CREATEit provides five options to select a screen for your background image.

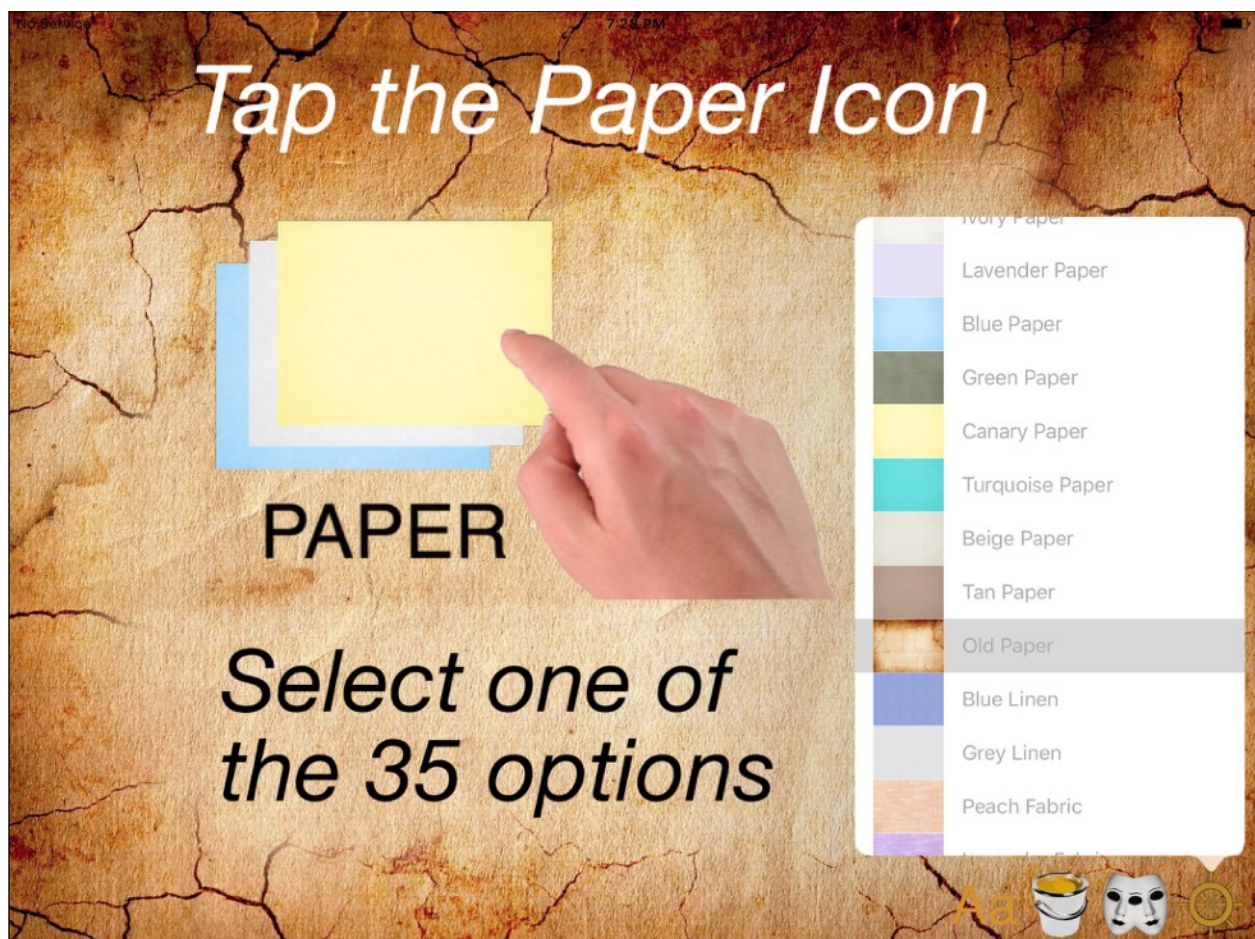
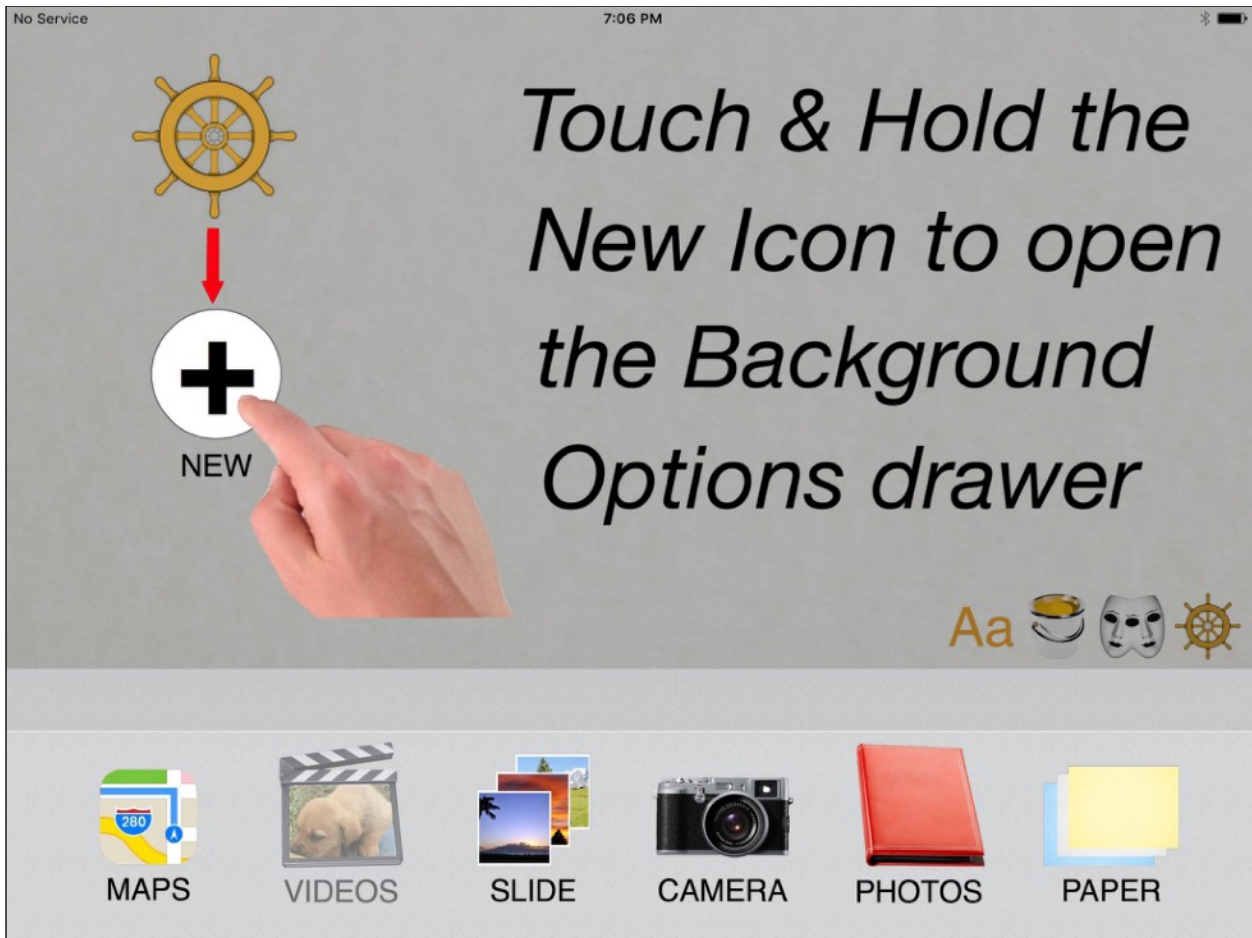
The Paper Icon opens an image picker with 35 colours and textures. Select one of the options to preview then touch the canvas to select the image. The default background scene on launch uses the White Parchment option.

The Slide Icon opens your Slide Deck Library. Selecting one of your slides loads the image.

The Photos Icon opens your Photos Library images. Selecting one of your photos loads the image immediately and closes the image picker window.

The Maps Icon displays a map view of your current location that can be scrolled and zoomed. Touch & Hold on the map display provides the option to save a map or satellite image of the location. You can also use the iPad camera to create your background.





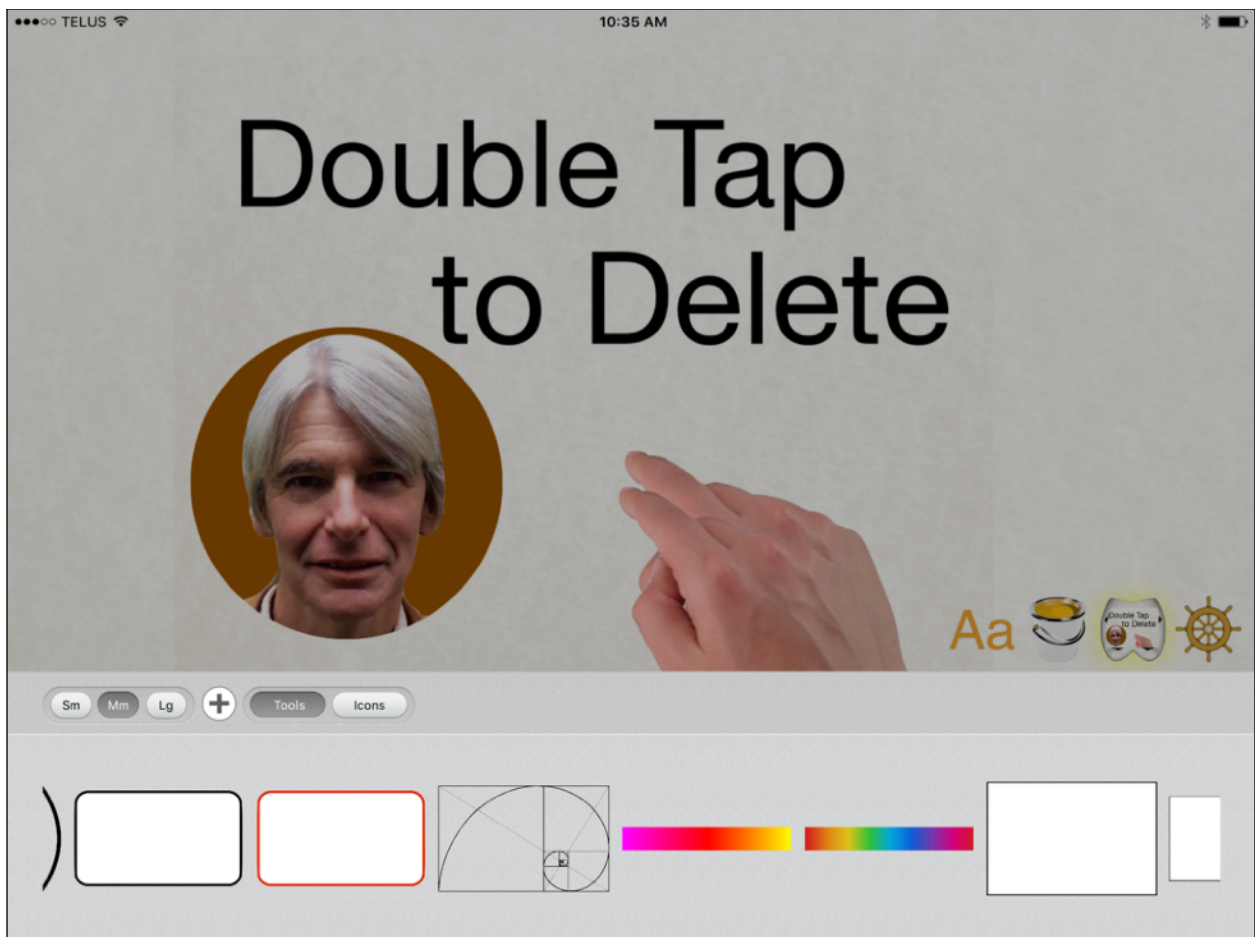


# Cast Items

CREATEit items are where the magic really happens. You can create your own and, or import hundreds of ready made items from our Library. Touch & Hold the Cast Icon to get started.

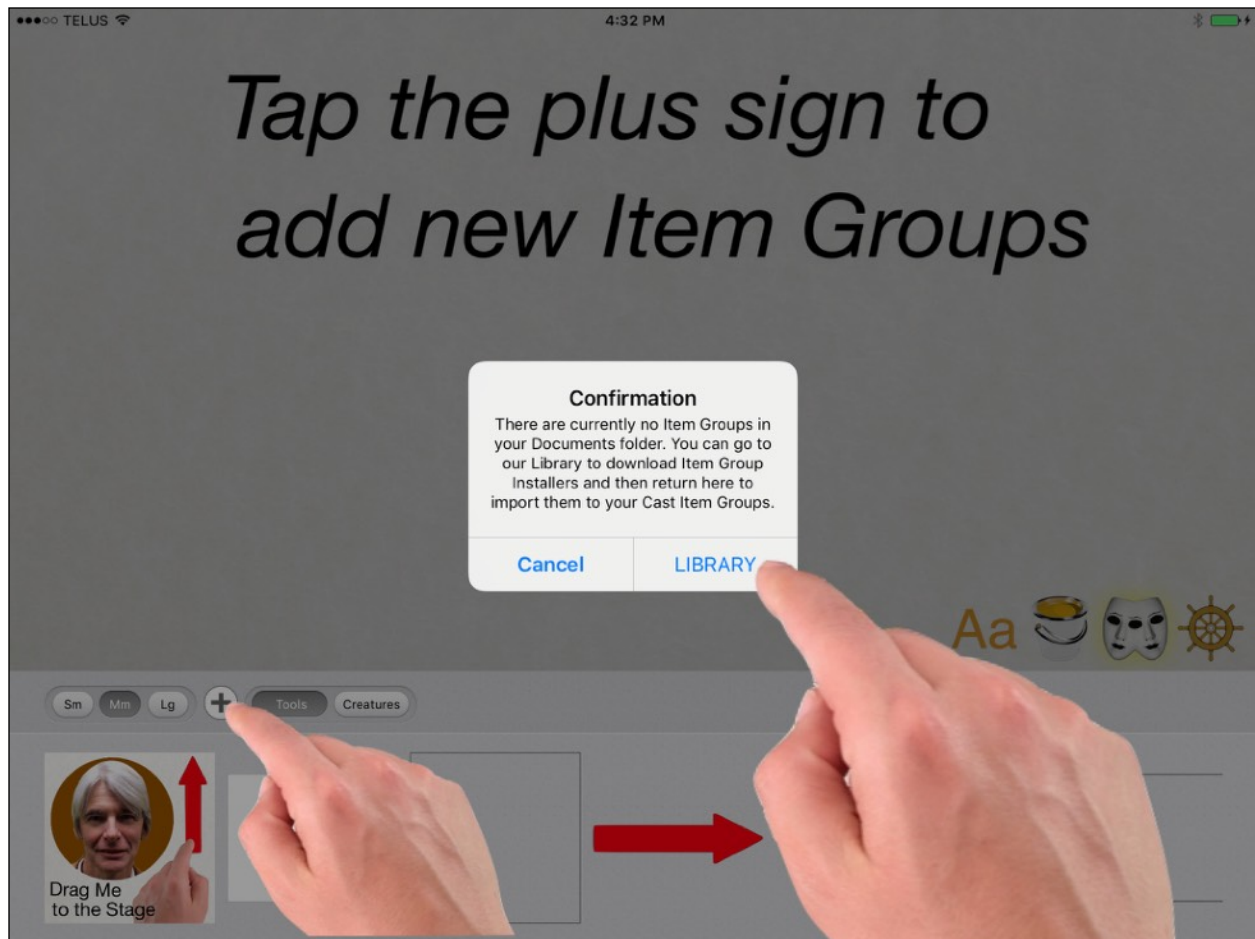


CREATEit ships with one item Group; Tools. Drag items directly to the stage or tap to load the Cast Icon well.



# Importing New Groups

You can visit our Item Library to download additional Item Group Installers. Tap the New Icon (plus sign) in the Title Bar to get started.



Tap the Library link to view the Library resources. We recommend starting with the Tutorials group. Tap the Tutorials link and follow the three steps to add the tutorial items to your Cast Drawer.





This Library contains over 800 items that you can download and import directly into your app's Cast section.

Use the following links to search for items to add to your Cast Drawer.

Tap to View the CREATEit Tutorials.

Tap to View all the Education Items...

Tap to View all the Commerce Items..

Tap to View all the Entertainment Items

Tap Back-to-Search to return here.

Note: For the time being all future updates will be reserved for our **CREATEit** app.

We have already added the export function and soon will be adding Video Frame Capture, PDF Viewer support and [WebSonar Library](#) integration. Your support will be greatly appreciated.

# CREATEit Item Library

## CREATEit Tutorials



Touch and Hold to exit back to your app.

## Tap the Tutorials link

## CREATEit Tutorials by Wildwood Resources Items Installer

1. Tap the Image to Download the Installer.
2. Touch and Hold to Exit the Library.
3. Tap the New (plus) Icon to import your New Item Group!

# CREATEit Tutorials



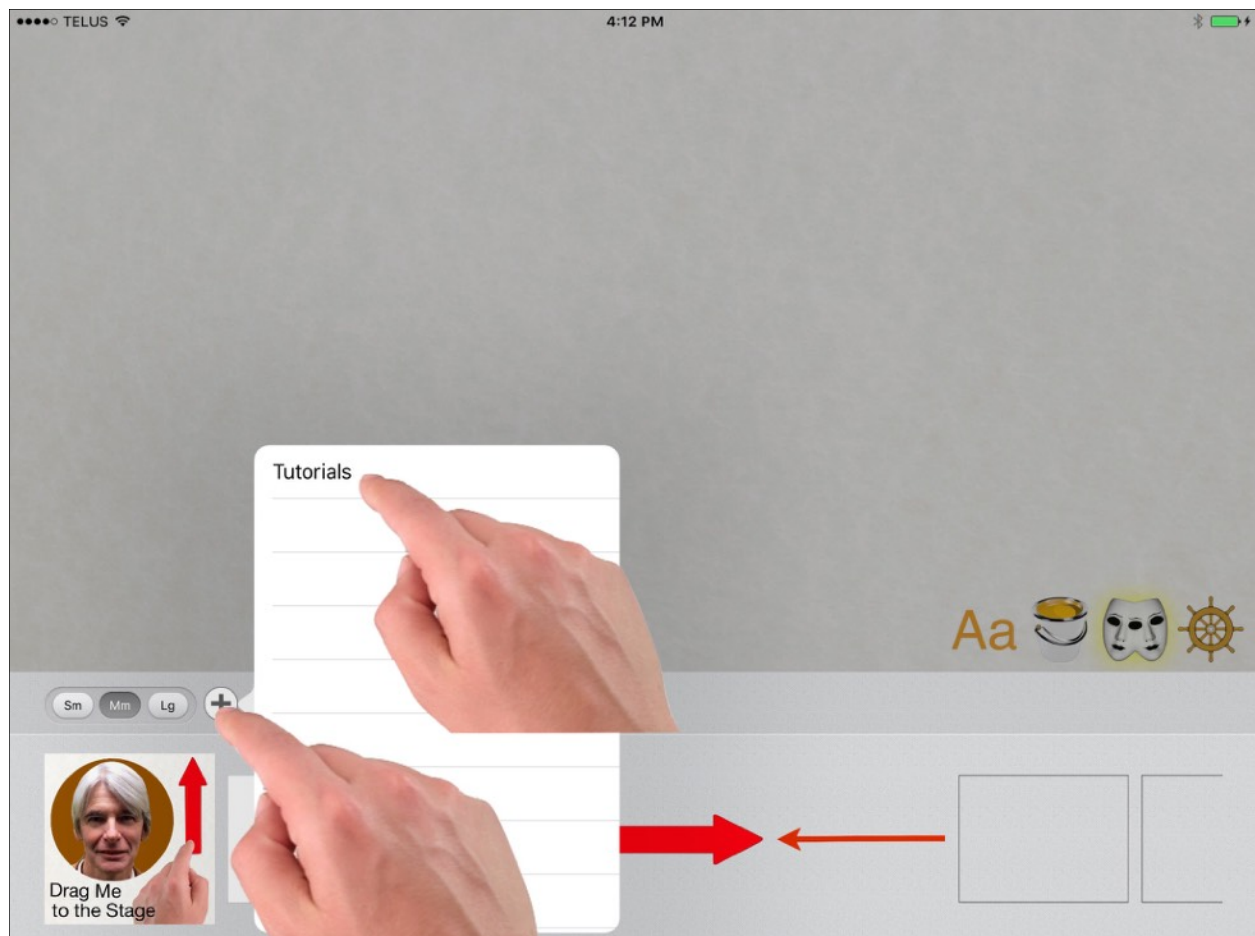
[< Back to Search](#)

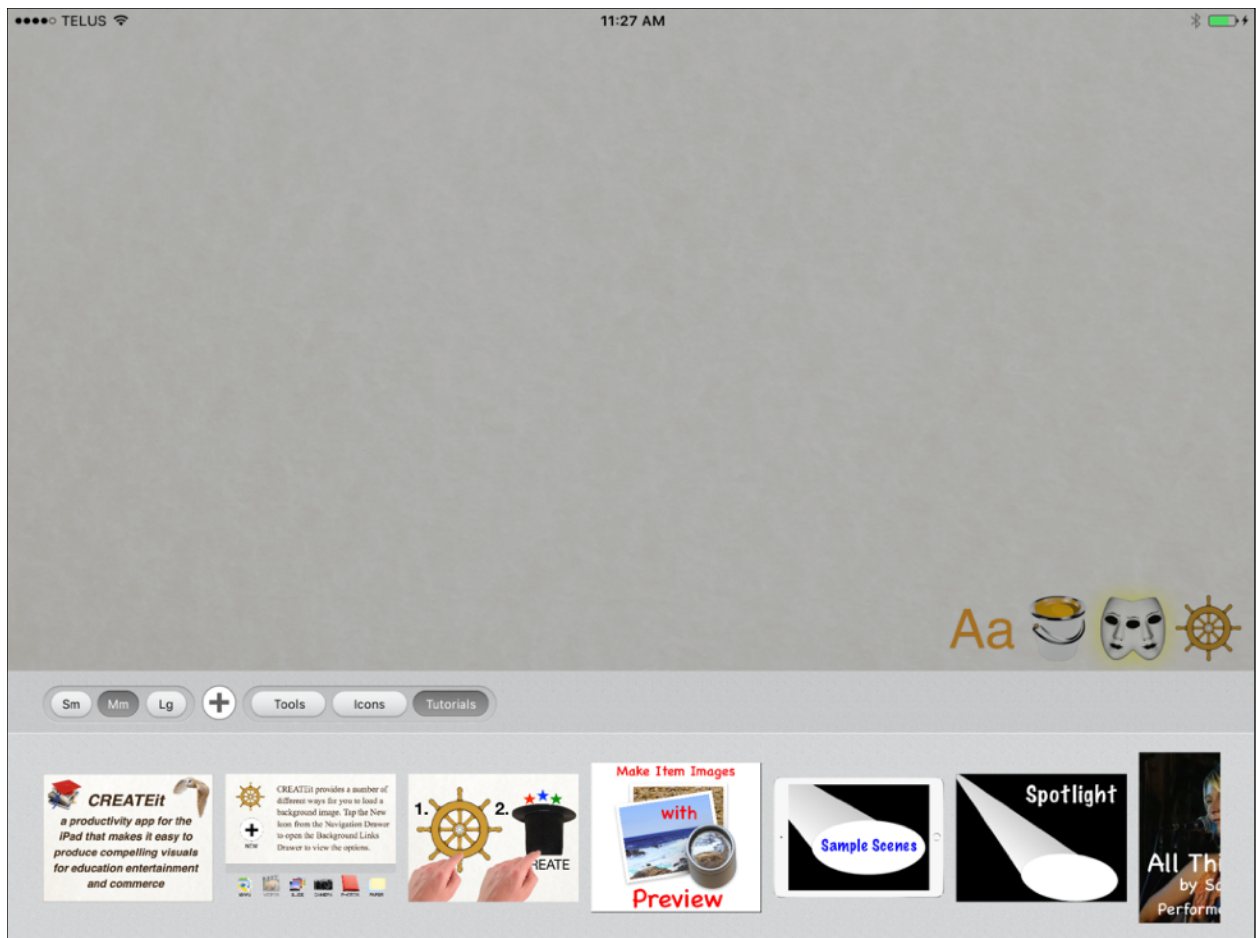
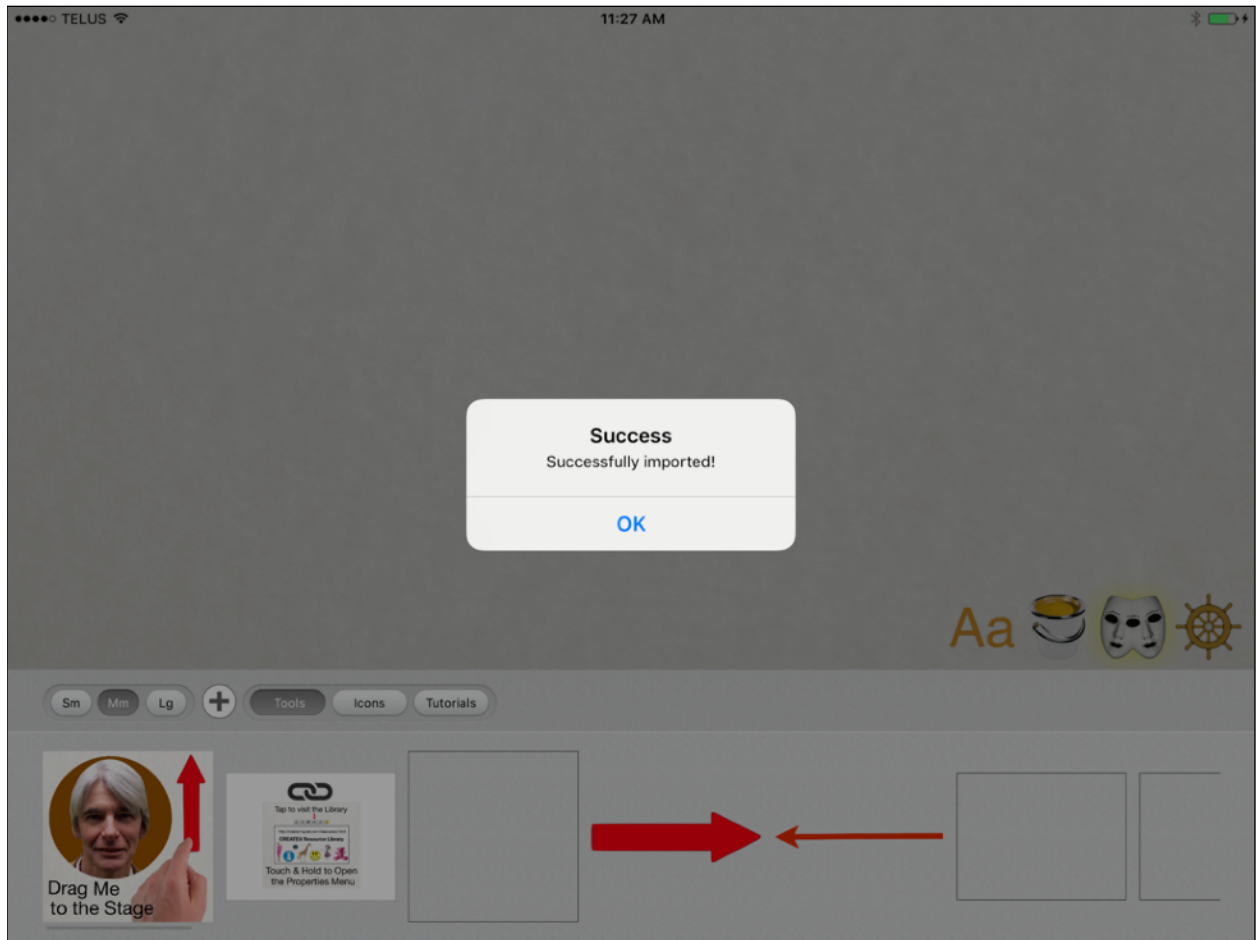
## Importing New Groups cont.

When the download is complete Touch and Hold to exit the Library.

Open your Cast Drawer and tap the New Icon (plus sign) in the Title Bar then tap on the list name to install the item group.

You can tap the New Icon anytime to visit the library to download additional Item Installers. We will be adding new item groups every month.



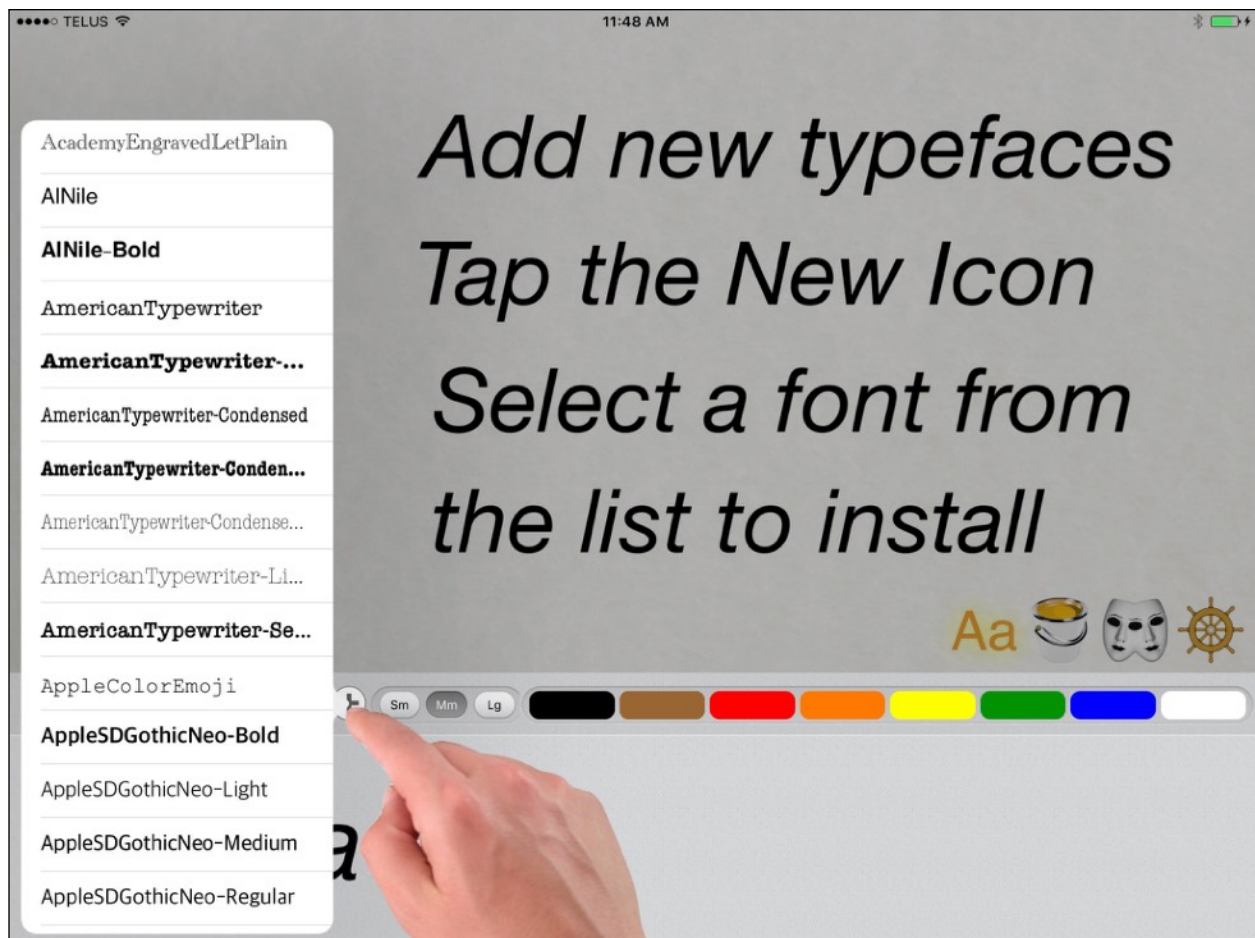




# Text Captions

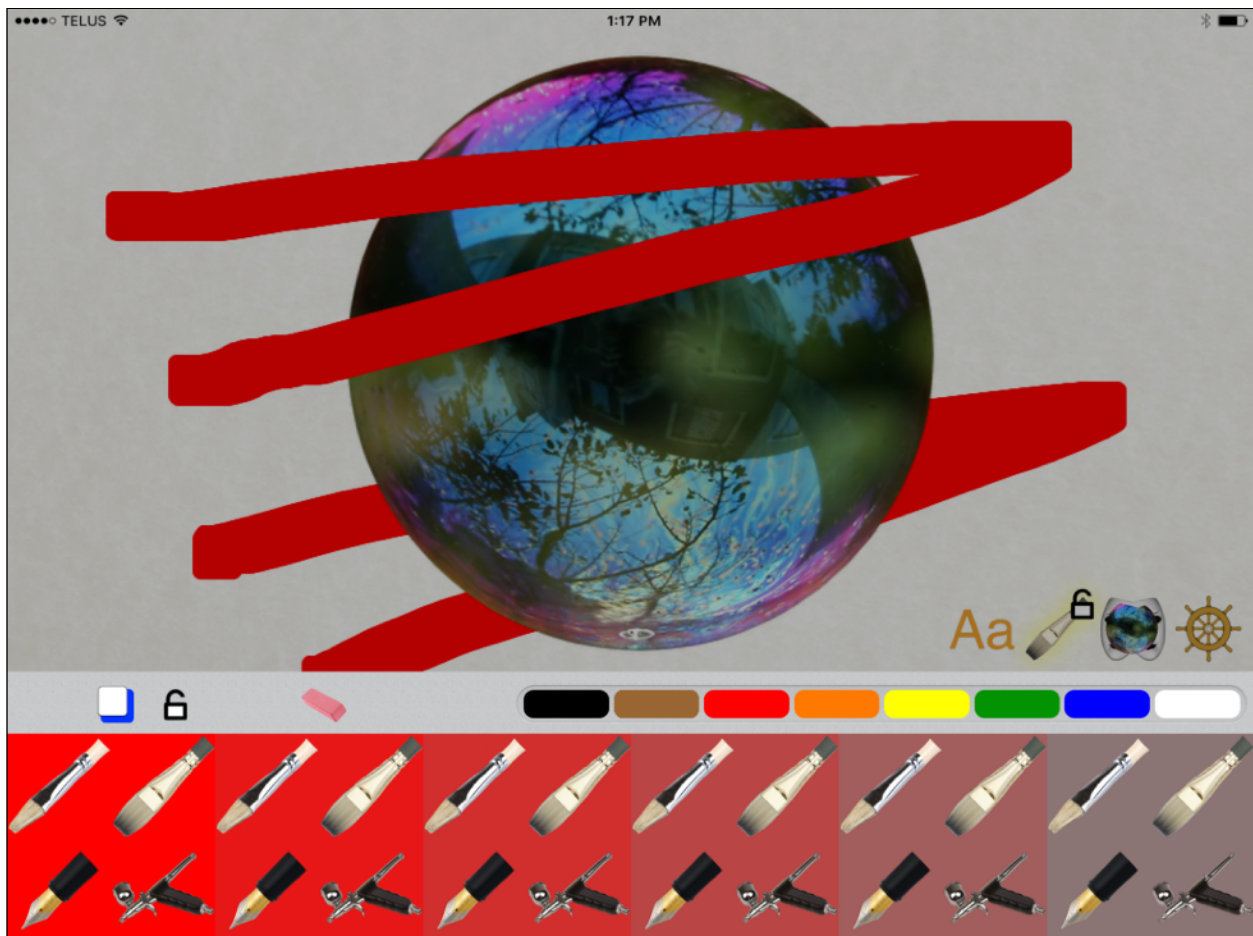
CREATEit provides a foundry for you to add any available fonts to your Type Drawer. Touch & Hold the Type Icon to open the drawer. Tap the New Icon (plus sign) in the Title Bar to display your font library. Choose a font from the list to add to your Type Drawer.

You can display the font name in the Title Bar by swiping up on the item. You can remove a font by Double Tapping it.



# Paint

CREATEit includes a paint function. You can choose from 48 shades and four brush shapes. The painting function is cancelled by default when you finish your first stroke. You can disable this behaviour by tapping the Lock Icon in the Paint Drawer Title Bar. You can paint under or over items on the stage by toggling the Layer Icon and erase all the paint by double tapping the Eraser Icon.

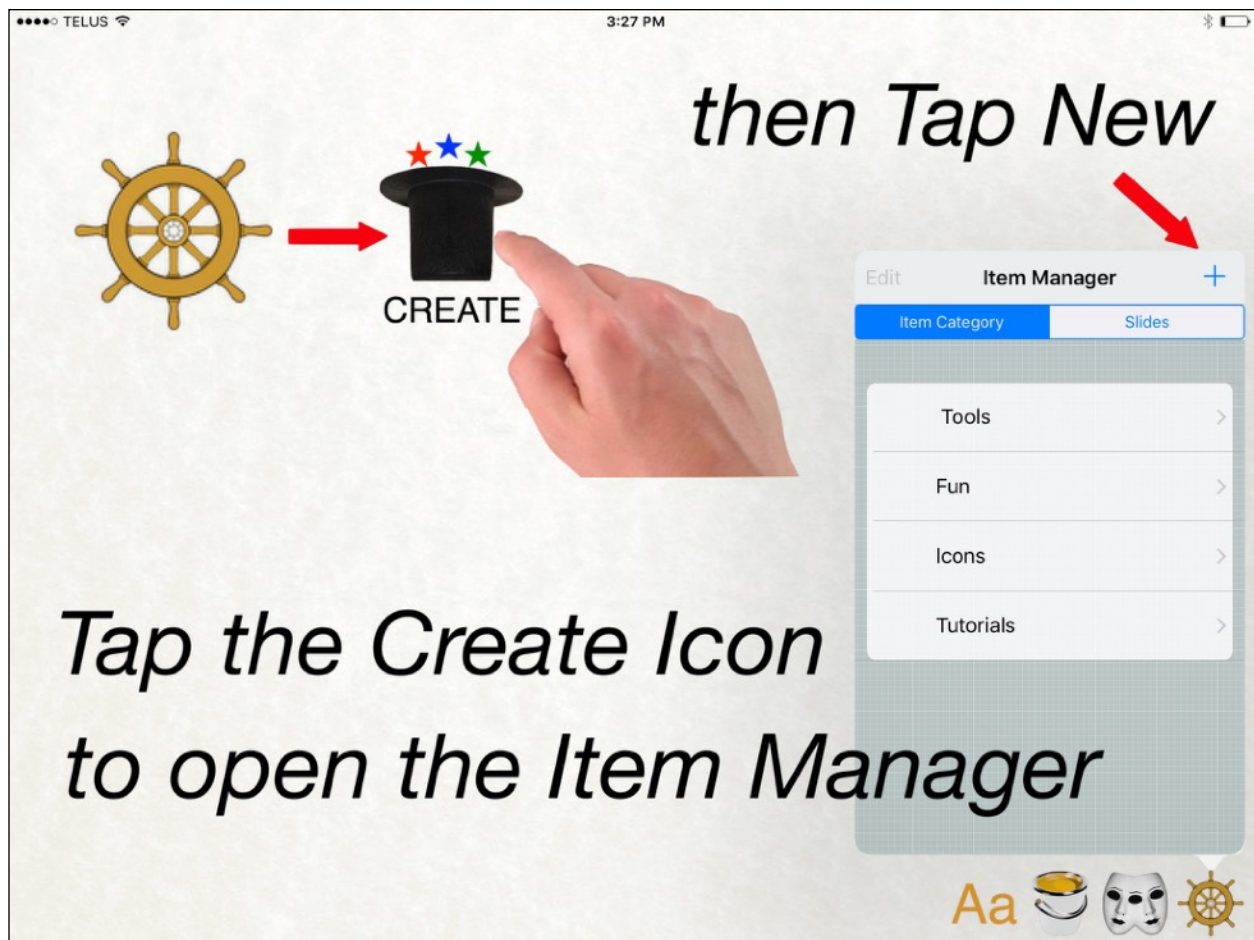


# Create

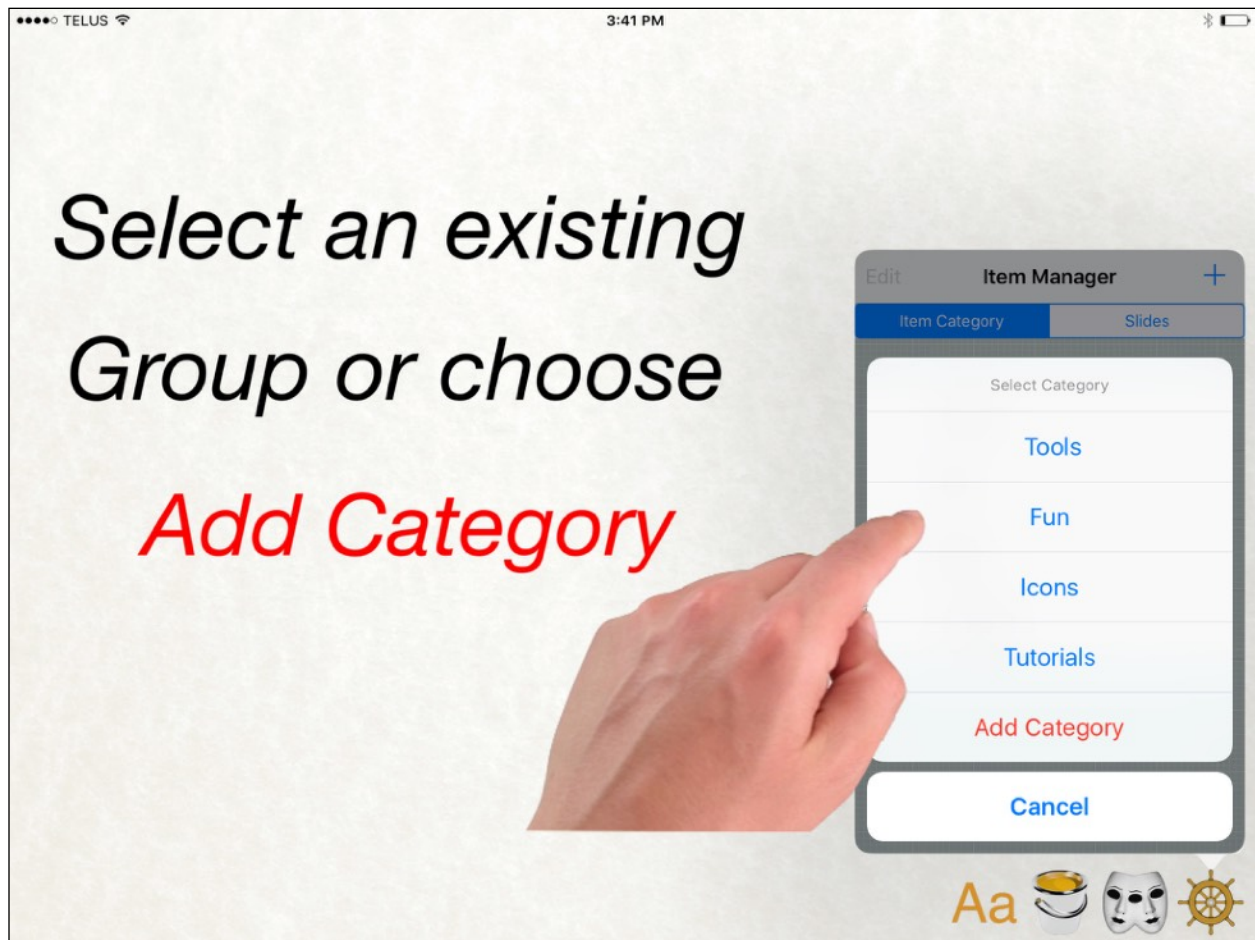
Tap the Create Icon under Navigation to build your own items and-or save your scenarios as slides.

The Item Manager displays your Group Categories and provides a link to save a slide of your current scene.

You can add your item to an existing group (Category) or create a new one. Tap the New (plus sign) in the Item Manager Title Bar to get started.



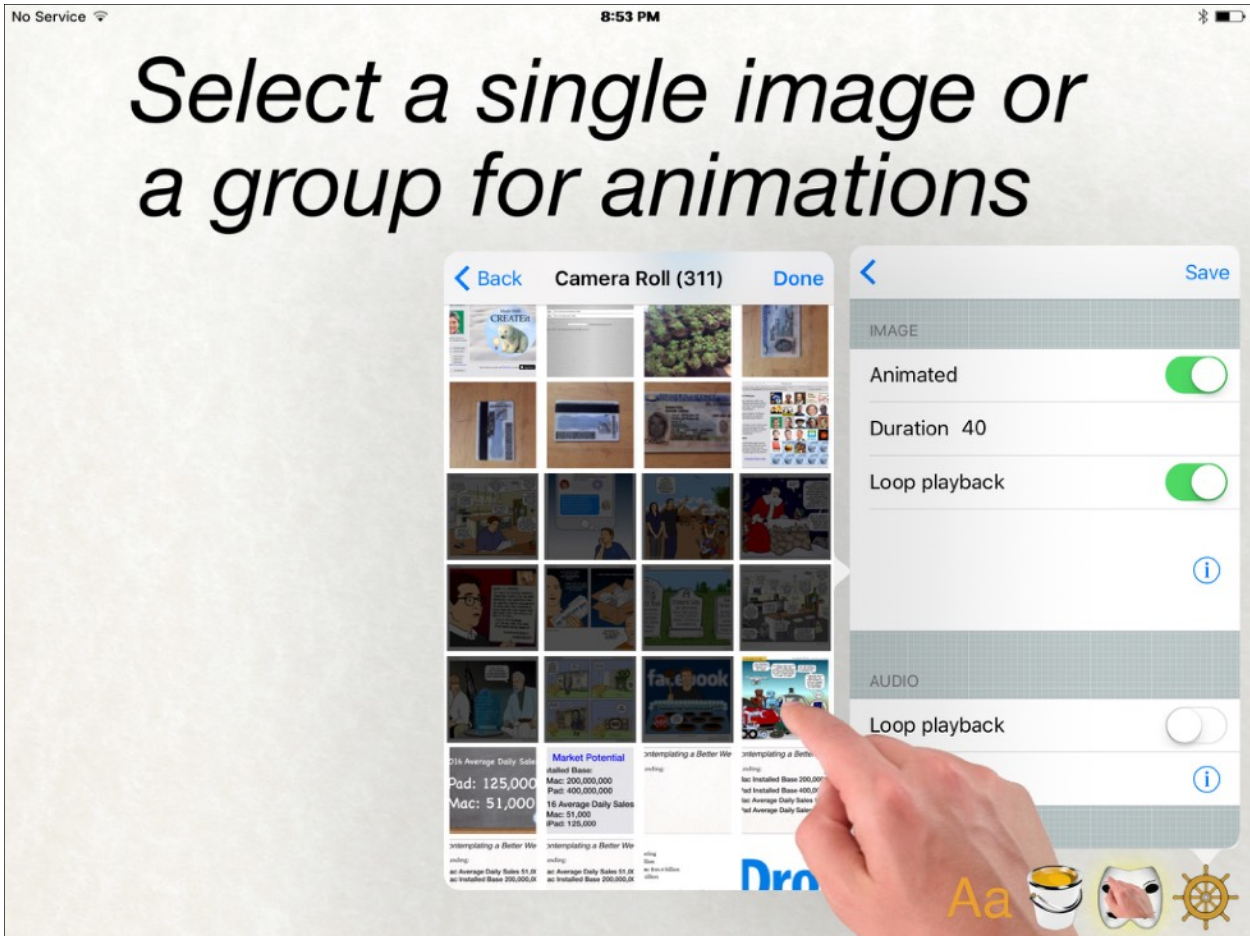




Items require a name and image but can also support additional properties. You can animate a group of images over a set duration and optionally loop the playback. Images are added in the order that you select them.

You can directly record a sound track or select one from your music library.

You can add a URL link that is available when you Touch & Hold an item on the stage to display the Options Menu.









# Presentations

Use the Slide Manager to create presentations that can be hosted in the Presentation Library for distribution to your intended audience. Each slide can include an audio track and a link to view external resources. When viewing a presentation you can touch to pause and play the audio. Tap to display the Interface Icons. Double Tap to open the Slide Drawer. Touch & Hold to view the external resources.

Tap to Load a Slide

Touch to Pause Audio

Swipe Forward or Back

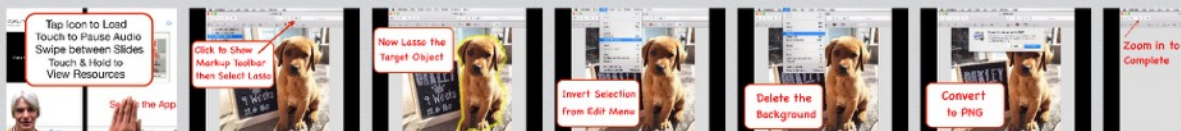
Touch & Hold to Execute Link



Slide Decks



Deck 1



# WebSonar Library Links

You can use the Library Manager to add direct links to your Libraries. In your web browser navigate to any library you wish to add; then save the Portrait Image and copy the URL.

Tap the Library Icon under Navigation to open the Libraries drawer.

Tap the New Icon (plus sign) in the Title Bar to add a new link. Libraries require a Name, a Link (URL) and an Image.



TELUS 10:35 AM schoollibraries.net

Copy Paste and Go

## My Portfolio



Use the following links to browse or search this Library. Use Back-to-Search to return here.

[Browse the Library](#)
[Browse the Images](#)
[Browse the Videos](#)
[Browse the Audio](#)

[Search Content](#)  
 [Search Titles](#)  
 [Search Notes](#)

You can use Shift-8 (\*) as a wild card

[View Search Tips](#)
[View Notes Tips](#)



Copy the URL


The URL is like a key to the world. They persist when it is cold and lonely. They are often met with scorn and ridicule because what they can see so clearly is nothing like the reality of today.

These Visuals were made with [CREATEit](#) on an iPad


[Download on the App Store](#)

[Back](#)

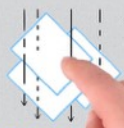





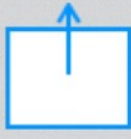
TELUS 2:47 PM



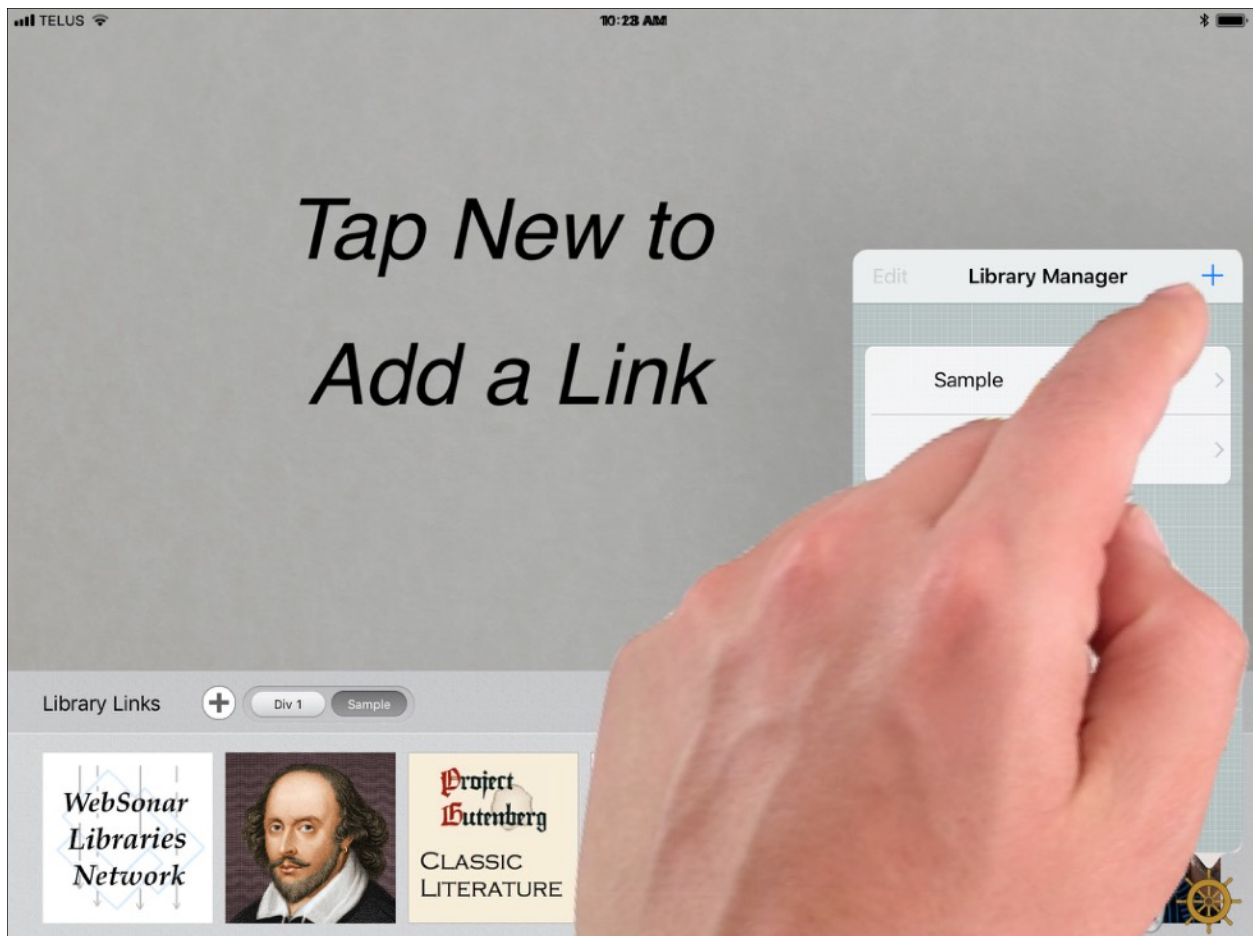
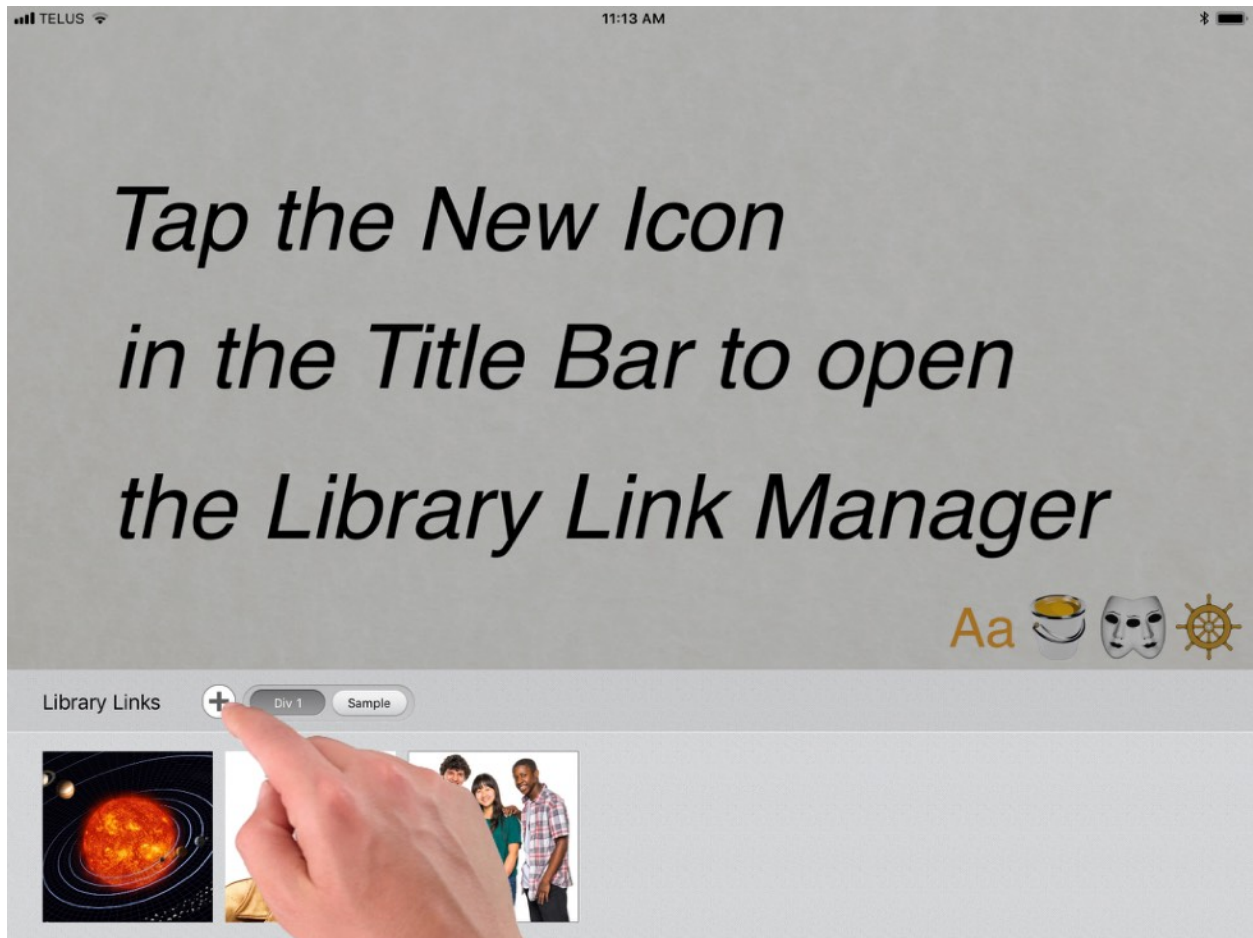
# Tap Navigation

Aa 🍷 🎭 ⚓

## then Libraries

 LIBRARIES
  CREATE
  HELP
  MUTE
  CLEAR
  NEW
  SHARE





# WebSonar

We are in the process of integrating CREATEit with WebSonar to create an iPad cloud document management solution that is independent, and free from tracking.

The screenshot shows a web browser window displaying the WebSonar Libraries Network website. The browser's address bar shows 'websonarlibraries.net' and the time is 10:45 AM. The website layout includes a large logo on the left, an introductory text block, a grid of library thumbnails, and a privacy statement at the bottom.

**WebSonar Libraries Network**

**Introduction to WebSonar**

WebSonar is a macOS application that dynamically generates a WWW presence from content stored in WebSonar Libraries.

With WebSonar you serve your own content, hosted on your own computer, located at home, in a Data Center, or at your School without trading your privacy. You simply add your documents; including images, video, audio and PDF files to one of your libraries.

These Library images are linked to 36 libraries. Each individual library can host an unlimited number of documents. My personal library is Number 102. Clicking the home icon on a library search page returns here.

[Users Guide](#)   [Download WebSonar...](#)

**Library Grid:**

- WebSonar Libraries Register
- Project Gutenberg CLASSIC LITERATURE
- CREATEit Resource Library
- Muse by Lauralyn
- Fruit Music
- SNAGGY & NITROZAC
- BC Utilities BCUC Commission
- SchoolLibraries.net
- MacQuarrie INSTITUTE CANADA
- Library 136

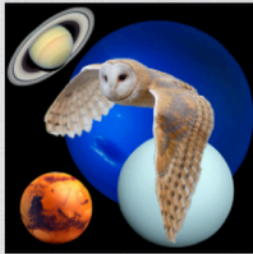
**Privacy Statement** - The contents of your Libraries are only created and displayed when a client issues a search request. There are no static pages for the robots to index.

With WebSonar you can serve your own content, hosted on your own computer, located at home, in a Data Center, or at a School without trading your privacy.





# WisdomQuest



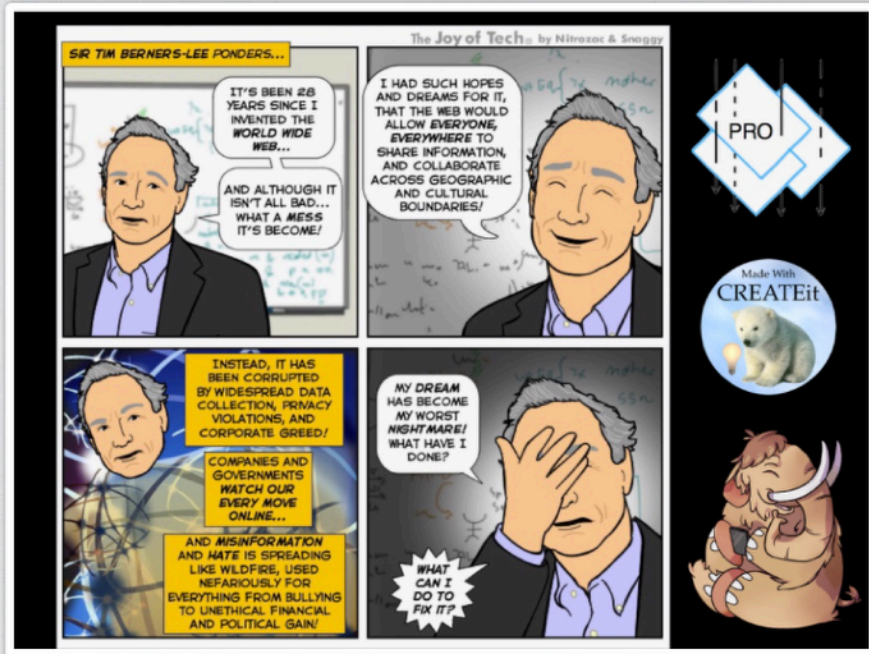
Use the following links to browse or search this Library. Use Back-to-Search to return here.

[Browse the Library](#) [Browse the Images](#)  
[Browse the Videos](#) [Browse the Audio](#)

[Search Content](#)  
 [Search Titles](#)  
 [Search Notes](#)

You can use Shift-8 (\*) as a wild card

[View Search Tips](#) [View Notes Tips](#)



These Visuals were made with [CREATEit](#) on an iPad



## My Library Settings:

1. Enter a User Name and Password that you will use to access this page!

Username:   
Password:

2. You can set your library access property to Private or Public. If it is set to Private visitors will require your user name and password to search your library. They will also be able to access this page to add documents to your library. Used in conjunction with the Notes feature this setting provides a venue for group collaboration.

☒ Public ☐ Private

3. You can set your library Notes feature to Enabled or Read Only. When Enabled visitors will be able to add and edit notes connected to any page of your documents. When set to Read Only the Notes Link will only appear on pages that contain notes. Your visitors will be able to search for and read these notes but will not be able to edit them.

☒ Enabled ☐ Read Only



[Add Documents to my library](#)

[Register my library](#)

[Index my library](#)



## *A Better Web - CREATEit - WebSonar Solution*

CREATEit and WebSonar will provide a new client server platform to improve the collaborative possibilities of the World Wide Web.

### 1. The Client Architecture.

CREATEit is an iPad app that provides the means to view, create, store, share and acquire content. This content includes video, image, audio, PDF, maps, slides, library links, and items. Any viewed content can be uploaded to a WebSonar Library. Any stored content group can be exported and uploaded to a Content library. These groups can be imported by any other CREATEit app client that has access to the library. These groups can include slides, items or WebSonar library links. CREATEit also provides typeface, paint and presentation functions.

## *A Better Web - CREATEit - WebSonar Solution*

CREATEit and WebSonar will provide a new client server platform to improve the collaborative possibilities of the World Wide Web.

### 1. The Server Architecture.

WebSonar is a macOS application that dynamically provides a WWW presence from content stored in individual libraries on the server. The library owner can add content to their library from any web browser. Each library can contain PDF, image, audio, and video content. Library access can be set to private or public. The content can be searched at the page level or by Title. Each page has a searchable note that can be set to read only or editable. The content of the libraries can not be indexed by the robot search engines. WebSonar is scaleable and can be used in a closed private network.

November 20th, 2017 NeoNet Corp

Made With  
**CREATEit**



*Touch & Hold to Exit...*